

# MONTHLY MEMBERSHIP PROGRESS REPORT

LOCATION NEPAL

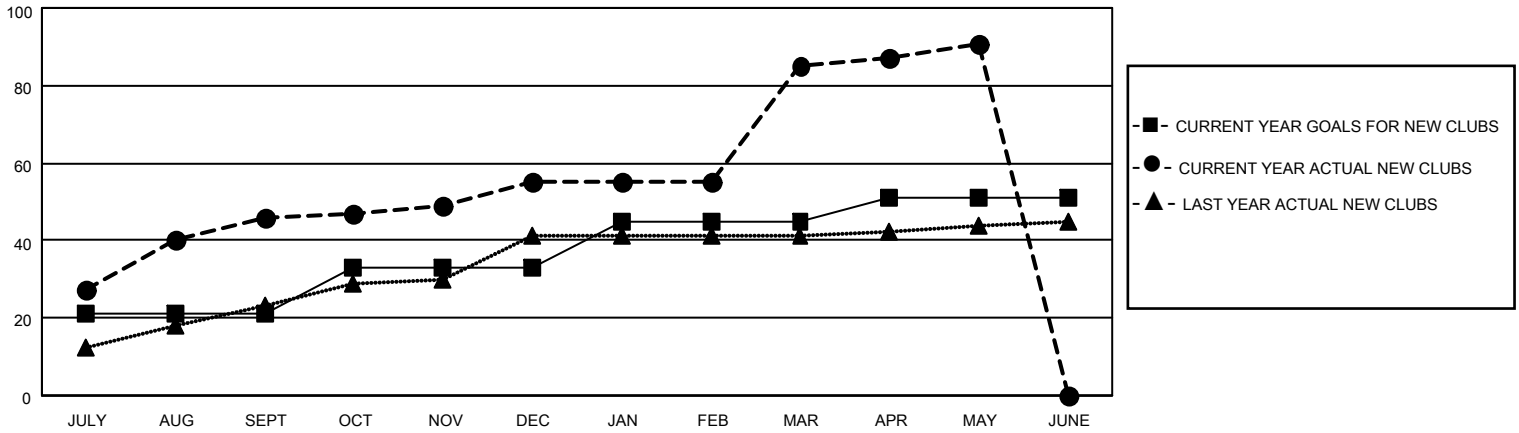
District 325A1

Results as of: 5/31/2022

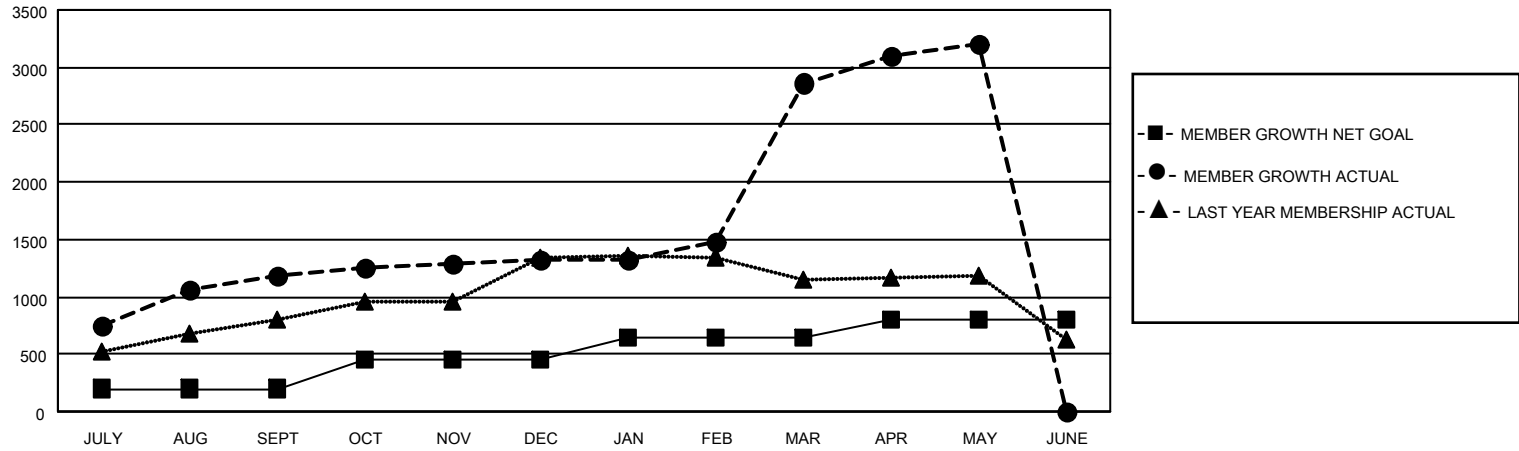
Clubs			
RESULTS FOR 2021-2022			
QUARTER	NEW CLUB GOAL	NEW CLUBS	DROPPED CLUBS
JULY/AUG/SEPT	21	46	4
OCT/NOV/DEC	12	9	1
JAN/FEB/MAR	12	30	0
APR/MAY/JUNE	6	6	0

Members			
RESULTS FOR 2021-2022			
QUARTER	MEMBER GROWTH NET GOAL	MEMBER GROWTH ACTUAL	DROPPED MEMBERS ACTUAL (including transfers)
JULY/AUG/SEPT	200	1394	192
OCT/NOV/DEC	250	339	192
JAN/FEB/MAR	200	1663	115
APR/MAY/JUNE	155	457	106

**GOALS AND ACTUAL NEW CLUBS CUMULATIVE**



**GOALS AND ACTUAL MEMBERS CUMULATIVE**



**DROPPED CLUBS: 5**

**282 CLUBS OF 398 ADDED 1 OR MORE NEW MEMBERS**

**GENDER DISTRIBUTION**

MALE	6,755 (67.25%)
FEMALE	3,290 (32.75%)
NON BINARY	0 (0.00%)
PREFER NOT TO ANSWER	0 (0.00%)

**DROPPED MEMBERS**

[CLICK HERE FOR CUMULATIVE MEMBERSHIP DATA](#)

DECEASED	6
CLUB CANCELLED	69
OTHER	530
<b>TOTAL</b>	<b>605</b>

TOTAL FAMILY UNIT MEMBERS 7,837

FAMILY MEMBERS PAYING HALF DUES 5,730